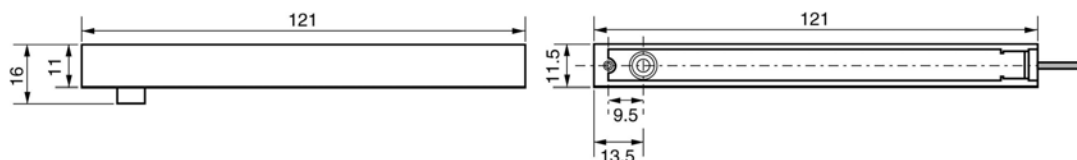


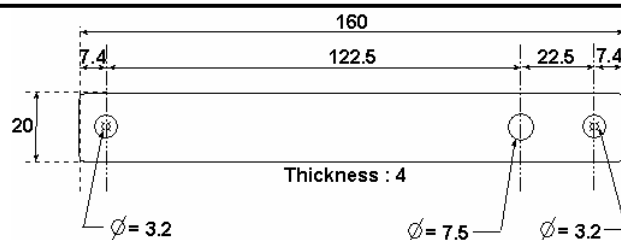
**FC** : SBK-111 front face accessory for recessed mounting • **SW** : SBK-111 surface accessory for surface mounting

## SBK- 111 DIMENSIONS



## FC KITS (BLACK)

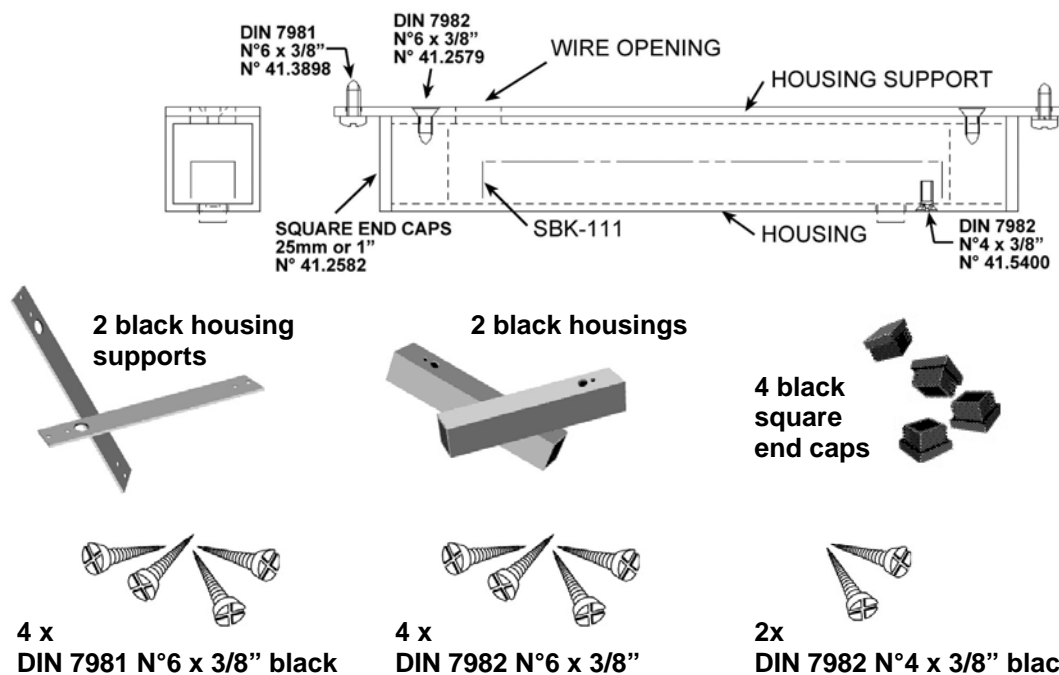
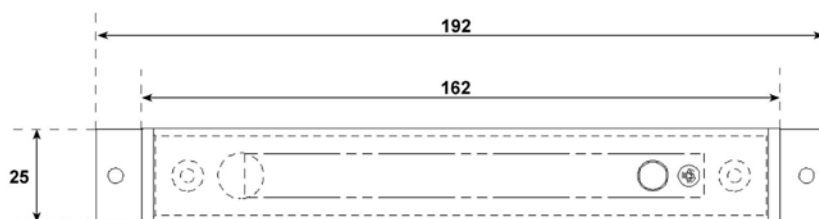
- 2 black FC faces;
- 4 + 2 additional  
DIN 7982 N°4 x 3/8" Black



Dimensions of the FC face [mm]

## SW KITS (BLACK)

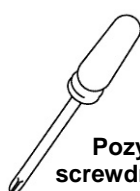
### Dimensions [mm]



## WORKING TOOLS



Drill :  
12 mm or 1/2"  
3 mm or 1/8"  
3.2 mm or 1/8"

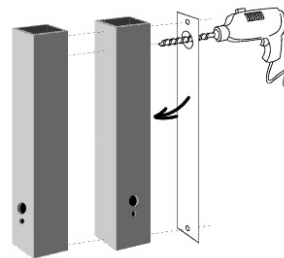
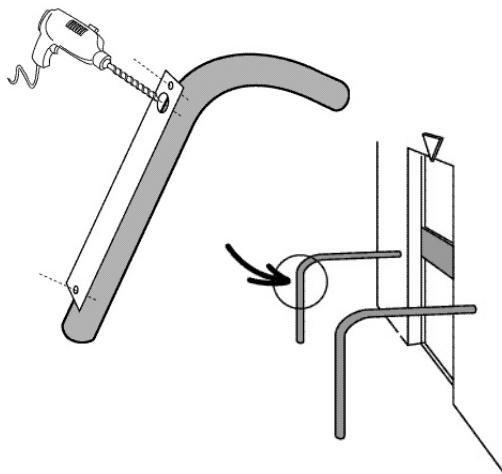


Pozidriv  
screwdriver

## INSTALLATION OF SBK-111 / SW

### 1. ON EACH BLACK HOUSING

- Stick the template on the back or on the side according to site requirements.
- Drill two holes of 3mm or 1/8" and one hole of 12mm or 1/2" according to template indications.



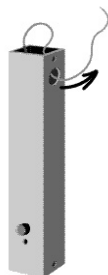
### 2. ON EACH GUIDE RAIL :

- Select mounting position for the emitter and the receiver so that they are facing each other. Take care to properly align the heads.
- Mark the position using the black housing support.
- On each rail, drill two holes of 3mm or 1/8" and one hole of 12mm or 1/2" according to the marks.

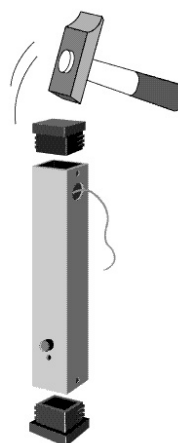
### 3. EACH BLACK HOUSING

- Remove the screw from the photoelectric. Remove tape and attach inside the black housing. Finally replace the screws.

- Thread the main cable through the biggest hole.



- Insert the black caps

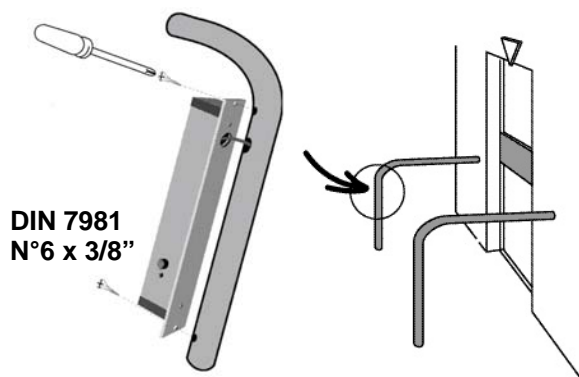


DIN 7982  
N°4 x 3/8"

- Screw on the black housing support (DIN 7982 N°6 x 3/8")



### 4. ON EACH GUIDE RAIL



DIN 7981  
N°6 x 3/8"

- Insert the cables into the guide rails.
- Screw both emitter and receiver on the guide rail.

## INSTALLATION OF SBK-111 / FC

- Select mounting position for the emitter and the receiver so that they are facing each other. Take care to properly align the heads.
- Mark the position.
- Cut out the profile to be able to insert the SBK-111 (taking account of FC dimensions).
- Stick the photoelectric heads on the black FC faces.
- Recess the SBK-111/FC into the profile and mark the position on the screws using the FC.
- Drill two holes of 3.2mm or 1/8" for each FC face.
- Screw both emitter and receiver.